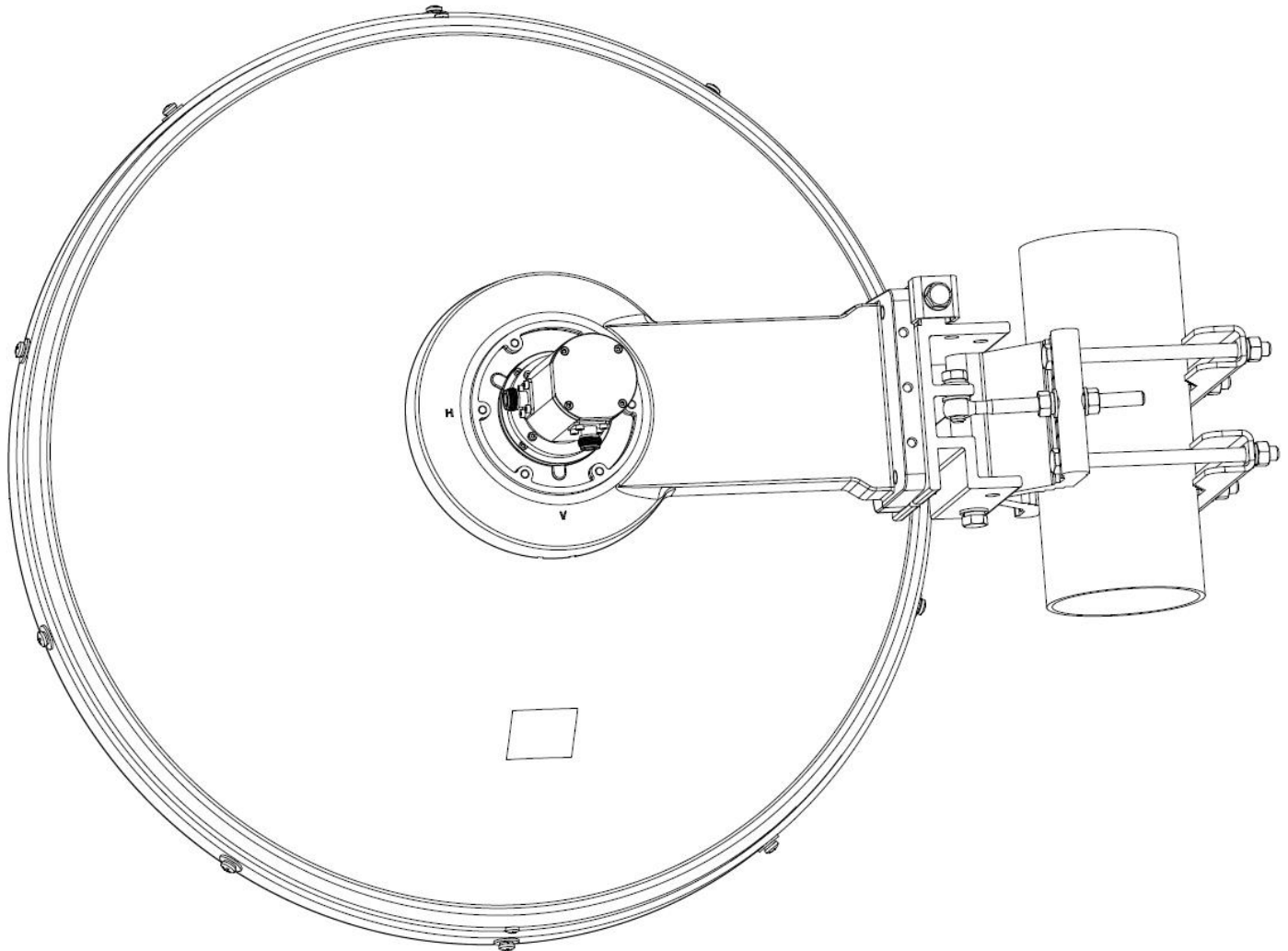




# 0.6M Ultra High Performance Microwave Antenna Installation Guide



This installation guide is provided for use by qualified technicians only in order to conduct installation, maintenance and removal.

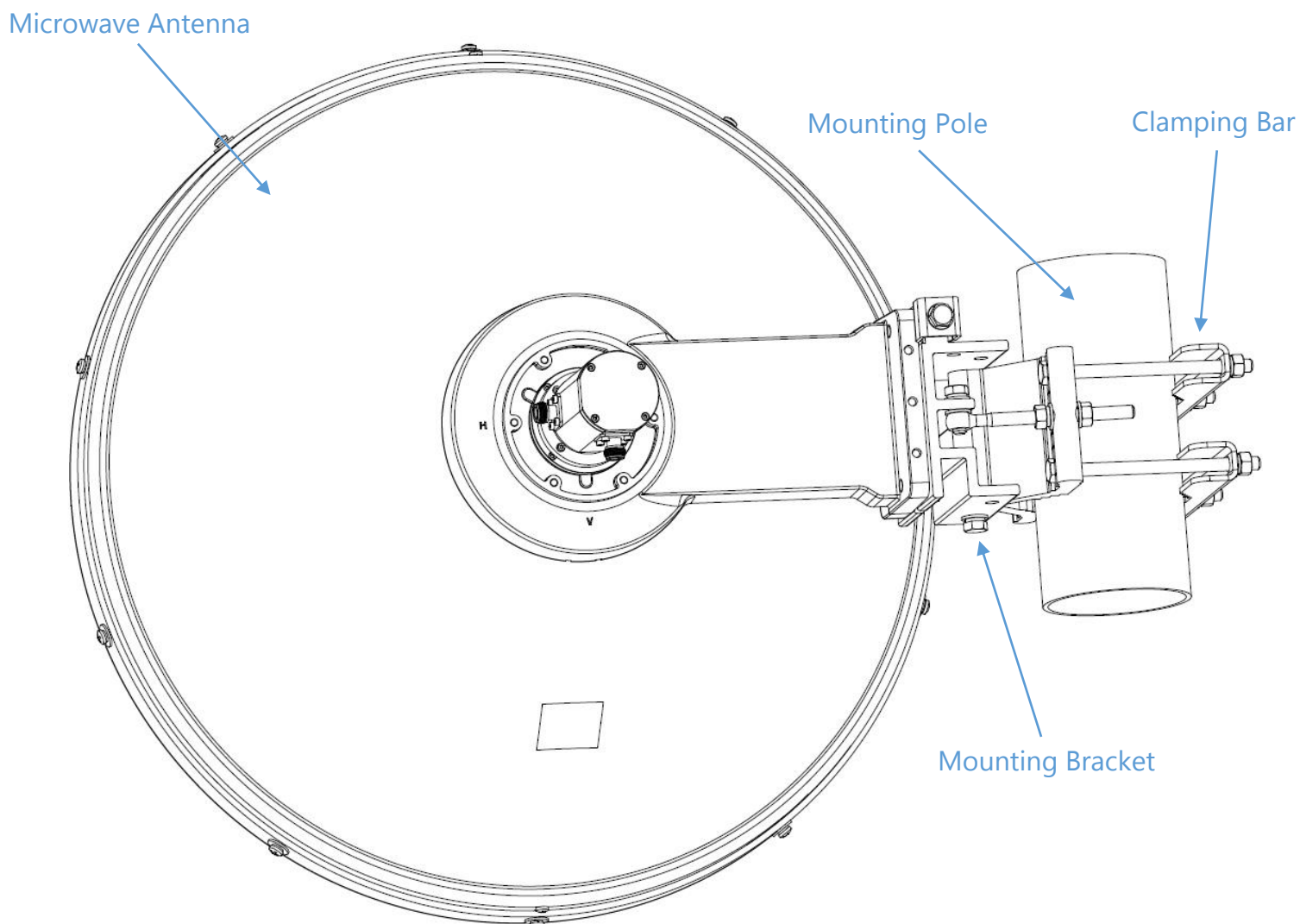


#### Important Notes:

- This guide is provided for the installation of 0.6M Ultra High Performance Microwave Antenna. Refer to this guide before antenna installation.
- Qualified technicians are required for antenna installation and the instructions provided in this guide must be strictly followed.
- Qualified technicians are required for annual inspections and maintenance during the operation of antenna in order to maintain the optimal performance of equipment.
- The antenna system should be inspected a minimum of once a year by qualified technicians to verify proper installation/maintenance/condition of equipment.
- 1 antenna set consists of reflector assembly, feed system and mounting kit. To suit the mounting kit the outside diameter range of the mounting pole must be 50mm to 114mm.

## 1 Overview

### 1.1 General overview.



### 1.2 Tools required.



2 x 16mm Spanner



1 x Torque Spanner

## 2 Antenna Installation

### 2.1 Open the shipping box.

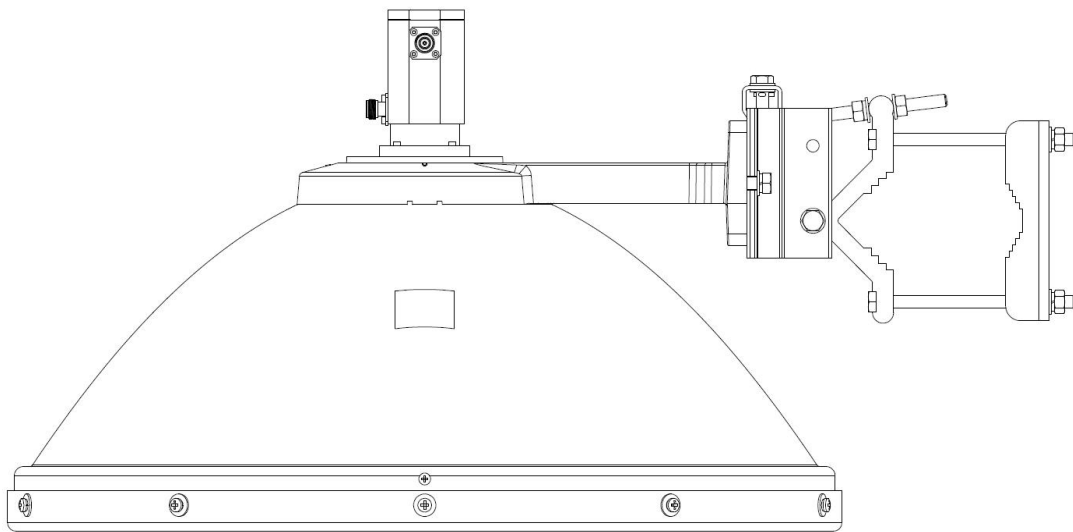
Ensure all components are present including:

1 x Antenna Set

Accessory Bag containing:

1 x Specifications Sheet

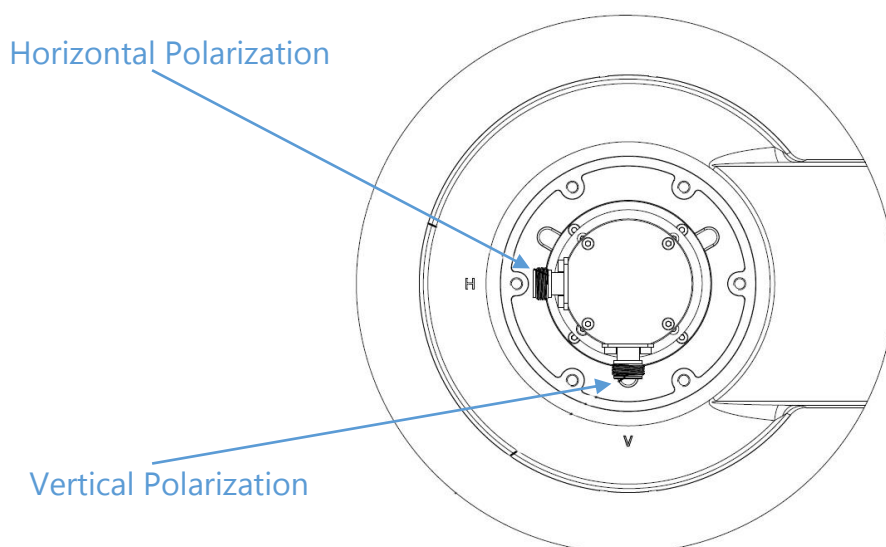
1 x Installation Manual



### 2.2 Mounting steps.

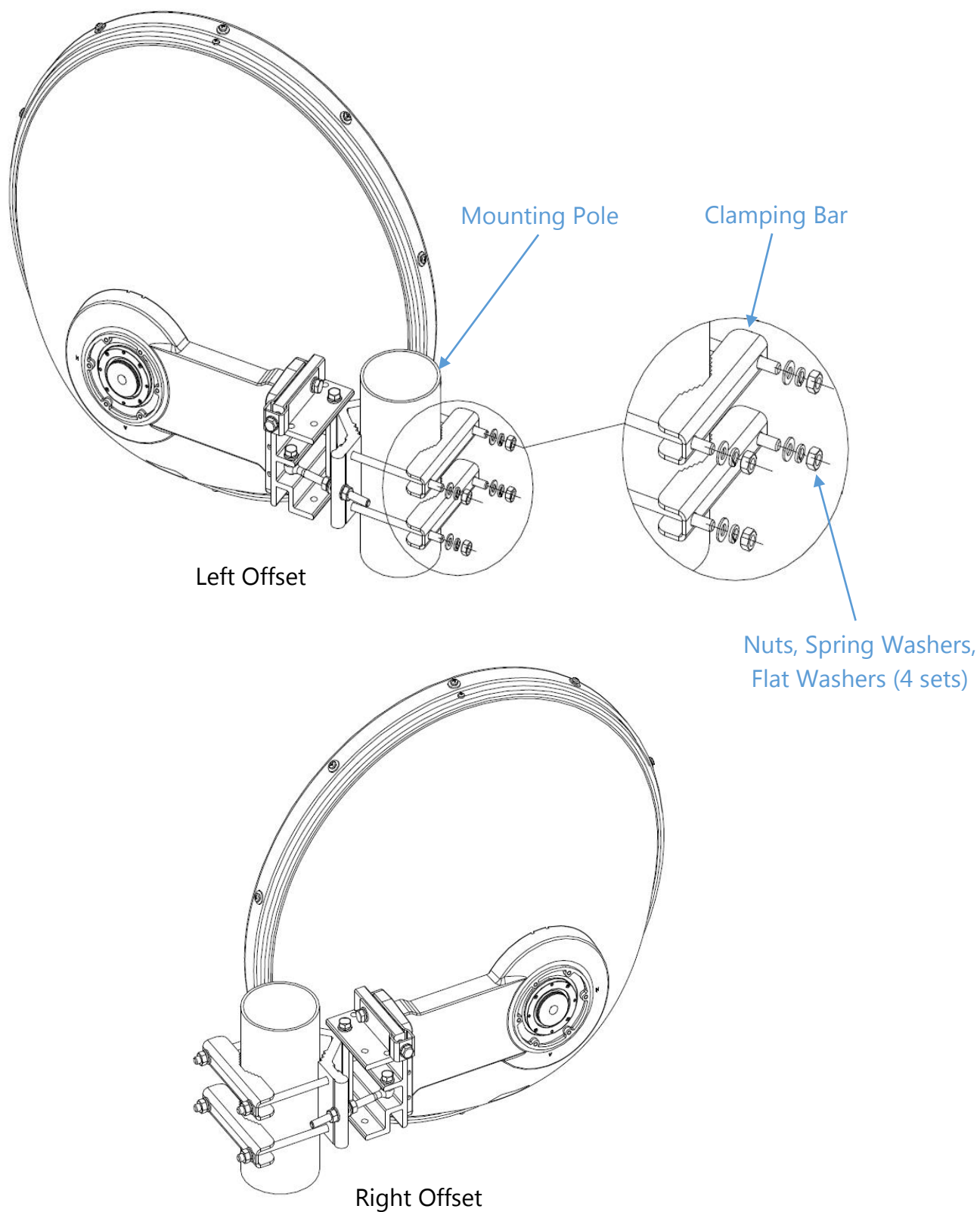
#### 2.2.1 Polarization.

Check and confirm the required polarization before mounting. Detail of polarization is shown in the below figure if there is no need to make adjustment.



### 2.2.2 Install the antenna to the mounting pole.

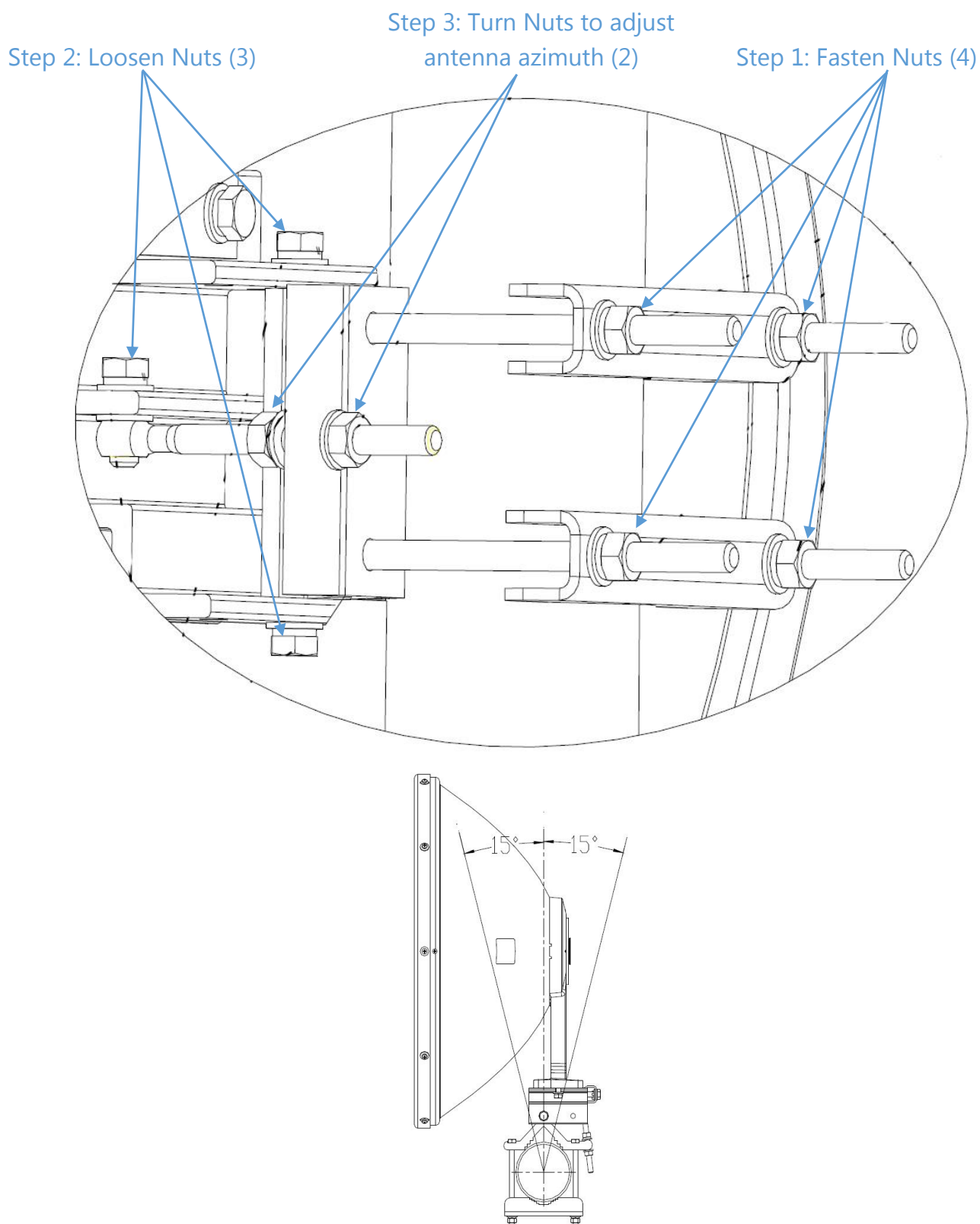
Install the antenna to the mounting pole as shown in below figure (Left Offset or Right Offset).  
Do not fully tighten the nuts.



### 3 Antenna Adjustment

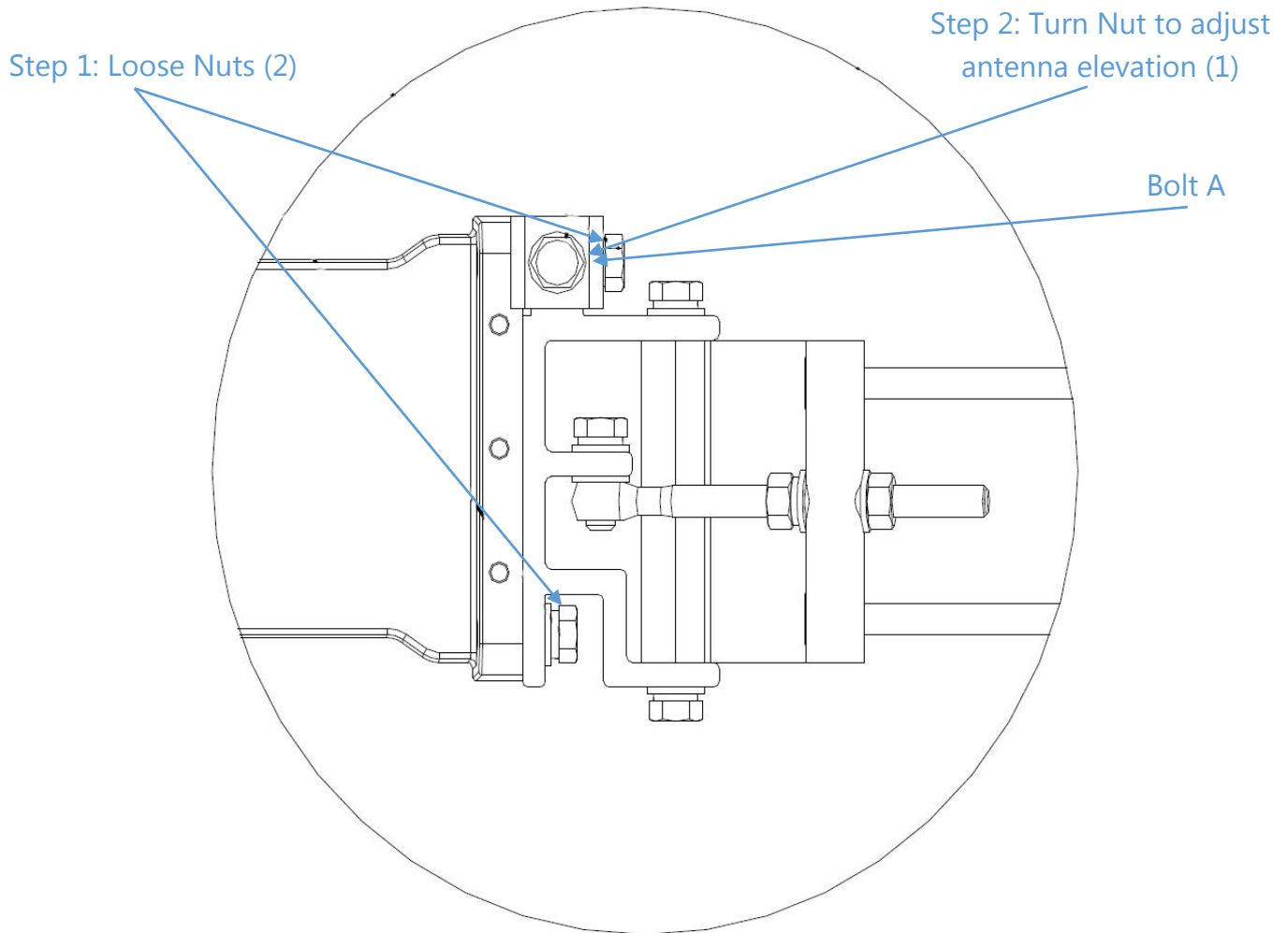
#### 3.1 Azimuth adjustment.

Follow steps shown in below figure to adjust the antenna azimuth. Once adjustment is completed, tighten all of the nuts. The antenna azimuth adjustment range is  $\pm 15^\circ$ .

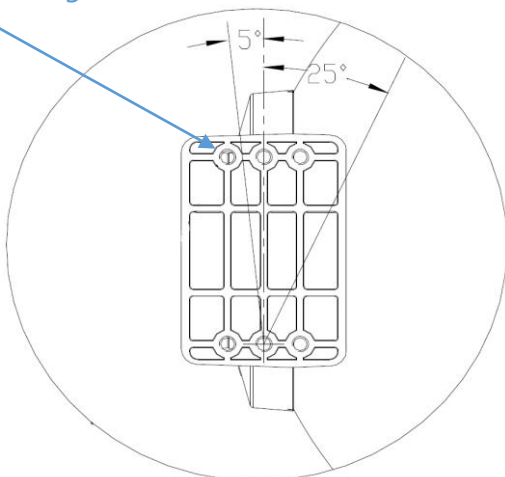


### 3.2 Elevation adjustment.

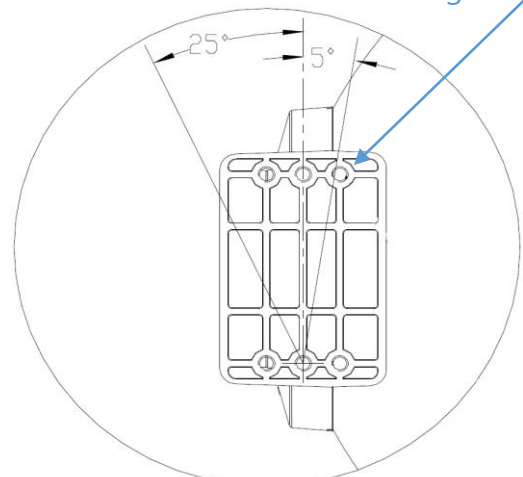
Follow steps shown in below figure to adjust the antenna elevation by changing the position of Bolt A, Flat Washer, Spring Washer and Nut. Once adjustment is completed, tighten all of the nuts. The antenna elevation adjustment range is  $+25^{\circ} \sim -5^{\circ}$  or  $+5^{\circ} \sim -25^{\circ}$ .



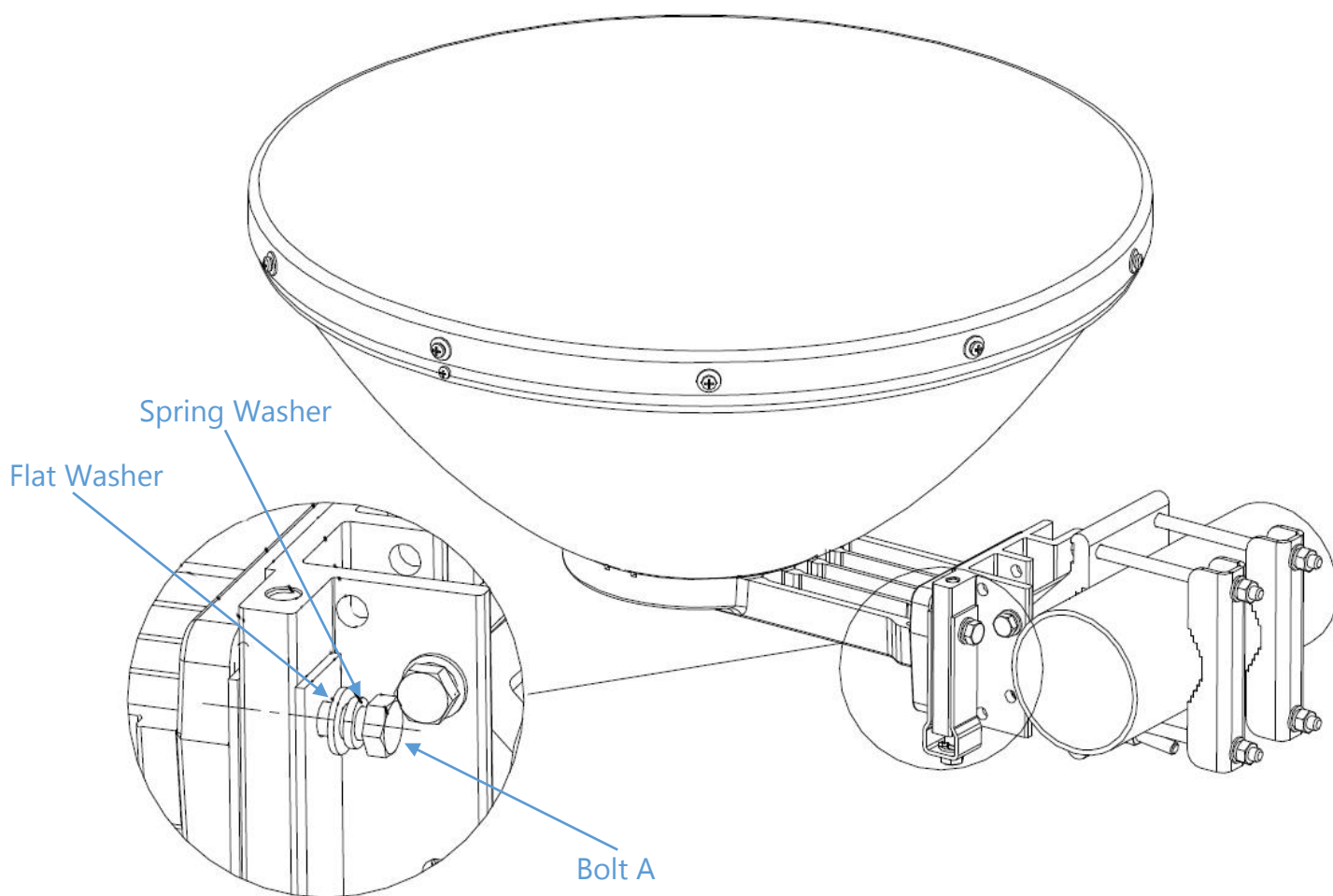
Elevation Adjustment  
Range  $+25^{\circ} \sim -5^{\circ}$



Elevation Adjustment  
Range  $-25^{\circ} \sim +5^{\circ}$







## 4 Finishing

### 4.1 Review.

Make sure all components are installed correctly.

### 4.2 Pluck plastic plug.

As shown in below figure, pluck the plastic plug in the plug hole at the bottom of the antenna.

Diameter of screw: 10mm  
Moment: 22Nm

